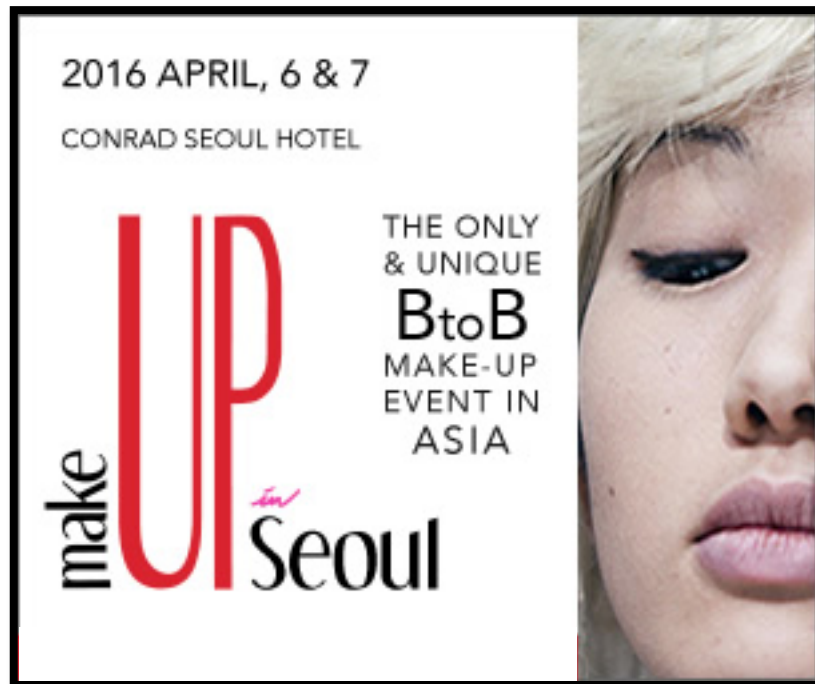


makeUPⁱⁿSeoul

Don't miss the best of MakeUp in Seoul today!

MakeUp in Seoul is now open.



MakeUp in Seoul

Conrad Seoul Hotel

Grand Ballroom – 3rd floor & Park Ballroom – 5th floor

10, Gukjegeumyung-ro, yeongdeungpo-gu

Seoul, South Korea

BY BUS



To Yeouido Transfer Center (Bus Station), next to IFC Mall

Blue Bus Line: 160, 162, 260, 261, 262, 360, 461, 600, 661, 662

Green Bus Line: 5012, 5615, 5618, 5623, 6513, 6623, 6628

Red Bus Line: 10, 10-1, 11-2, 83, 88, 301, 320, 2500, 3601, 5601, 8600

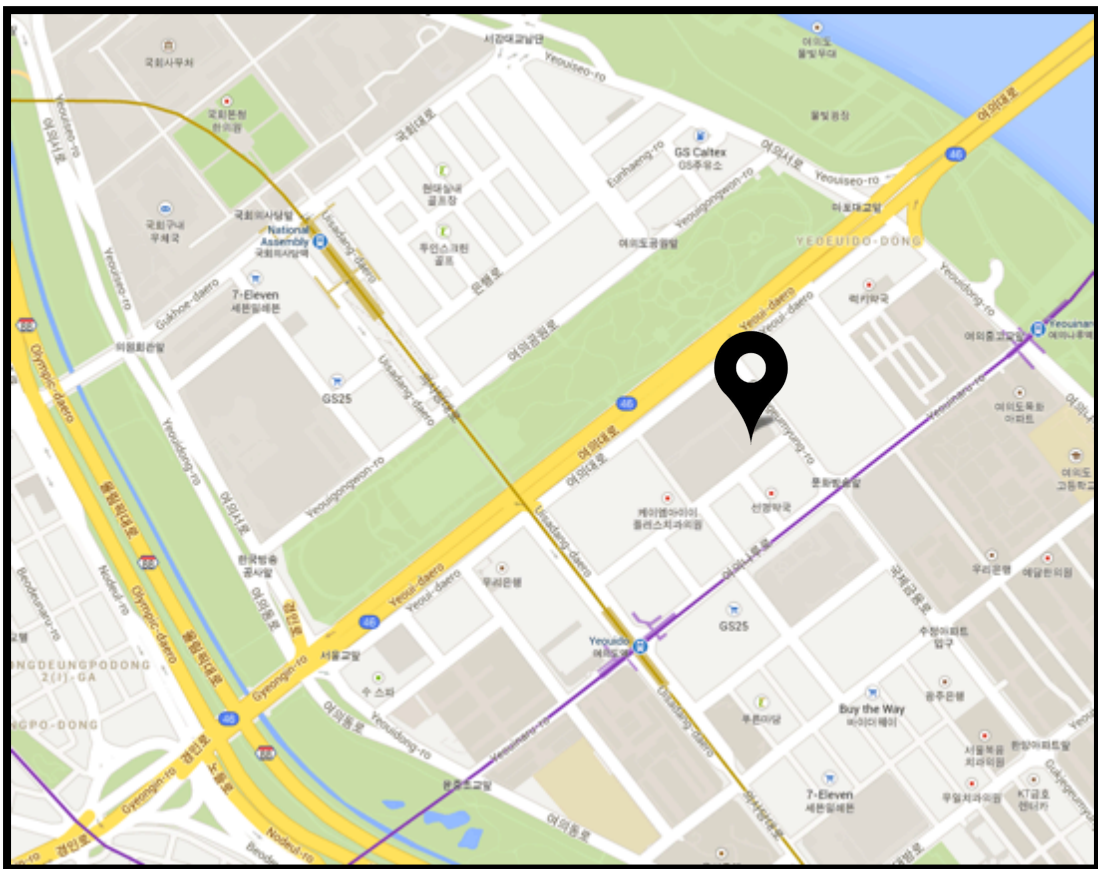
BY SUBWAY



Subway line 5 or 9, Exit 3 connected to IFC Mall

BUS ROUTES FROM THE AIRPORT :

The bus n°6030 from the arrival terminal at the airport, gate 13 A, will take you directly to the Conrad Seoul Hotel (name of the bus stop)



ATTENTION

The pre-registrations are now over.

Please understand that visitors who were not able to pre-register online, the 60 000 KRW regular access fee will have to be charged on site registration.

For those who have registered but not have yet received their badge access, the hostess at the entrance will find your registration on the system.

Looking forward to welcoming you!